

Om lidt blir her stille

Kim Larsen



8



15



23



30



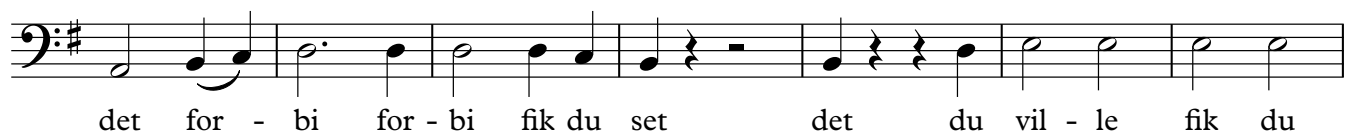
37



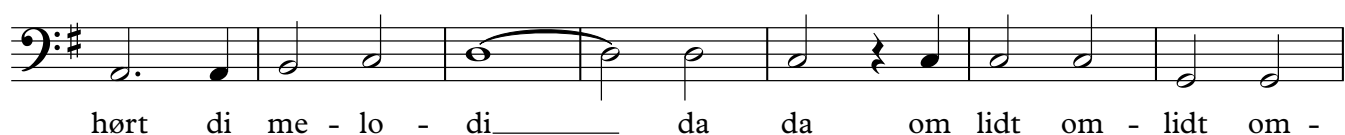
44



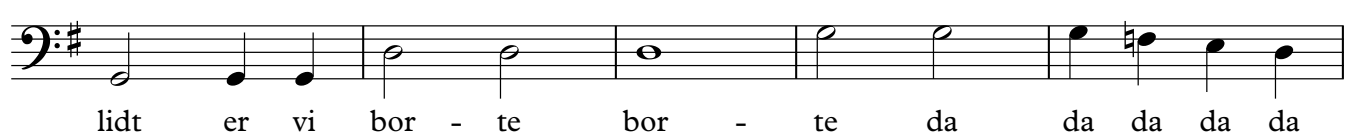
52



59



66



2

Bass

71

Musical notation for Bass part, measures 71-72. The notation is on a single bass clef staff with a key signature of one sharp (F#). The melody consists of the following notes: G2 (quarter), F#2 (quarter), E2 (quarter), D2 (quarter), C2 (half), B1 (half), A1 (half), G1 (half). The notes are grouped into measures: G2, F#2, E2, D2, C2, B1, A1, G1. The notes are: G2, F#2, E2, D2, C2, B1, A1, G1.

da vi se må - ske i - - gen